

# SHACMAN

[www.shacman.com](http://www.shacman.com)



Wechat



Youtube



Facebook

2025



# CONTENTS



## INTRODUCTION

About us  
P 03/04  
Make headway  
P 05/06



## R&D

Innovation strength  
P 09/10  
Multi-route R&D  
P 11/12  
Autopilot  
P 13/14  
Reliability validation  
P 15/16



## PRODUCT

6000 series  
P 19/20  
5000 series  
P 21/22  
3000 series  
P 23/24  
Multifunction  
P 25/26



## SERVICE

CARE service  
P 29/30  
Flexible guarantee  
P 31/32  
SHACMAN telematics  
P 33/34



## GLOBAL

International market  
P 37/38  
Africa  
P 39/40  
Eastern Euro & CIS  
P 41/42  
Asia Pacific  
P 43/44  
Middle East  
P 45/46  
Central & South America  
P 47/48  
Key projects  
P 49/50



SHACMAN  
TRUCKING MADE BETTER



# INTRODUCTION

As a leading international provider of commercial vehicle solutions, SHACMAN has a presence in over 140 countries and markets worldwide, having delivered over 2.4 million trucks to millions of customers globally.

Since its establishment in 1968, SHACMAN has been dedicated to producing reliable trucks that meet customer needs. Through the operations of complete vehicles, specialized vehicles, parts, and after-sales services, an organized business matrix has been established.

To fully leverage the advantages of the entire industry chain and optimize the market services provided to global partners and customers, SHACMAN's brand image has evolved from a sole manufacturer to a comprehensive solution provider. In pursuit of our proud service motto - "To Satisfy Customers with Ultimate Quality", we are going the extra mile for customer solution.



**25000+**  
Workforce

**100+**  
Subsidiary

**360  
thousand+**  
Export sales

**2.4 million+**  
Total sales

**600+**  
Daily production



## BRAND PROMISE

At SHACMAN, every employee is dedicated to going the extra mile for our customers. "To satisfy customers with ultimate quality" is our core service motto, which is ingrained in the DNA of every employee and product. Our professional and pragmatic approach to work has resulted in products and services of ultimate quality and our meticulous attention to detail can satisfy every customer.

Our brand promises to always make extra efforts for each and every customer, to give our customers extra fuel mileage and uptime. We take full responsibility for our customers throughout "TWO FOCUSES" in mind: the PLM (Product Lifecycle Management) and WCOP (Whole Customer Operation Process).



TRUCKING MADE BETTER



SHACMAN



www.shacman.com



SHACMAN established. SX250 was the first heavy off-road truck with complete independent intellectual property rights in China.

1968



1985

The first batch Steyr heavy-duty trucks roll-off.



1988

SHACMAN exported to overseas for the first time.



2006

The establishment of Shaanxi Heavy Duty Automobile Import & Export Co., Ltd.



2017

SHACMAN stepped into the first echelon in China heavy truck industry, with an annual production of 190,300 units.



2009

Global launch of SHACMAN brand.



2020

President Xi Jinping made an on-the-spot investigation on SHACMAN in April 2020.



2022

SHACMAN expansion project is officially put into operation.



2024



SHACMAN, with its flagship models, is set to participate in the IAA 2024.



TRUCKING MADE BETTER

SHACMAN

www.shacman.com

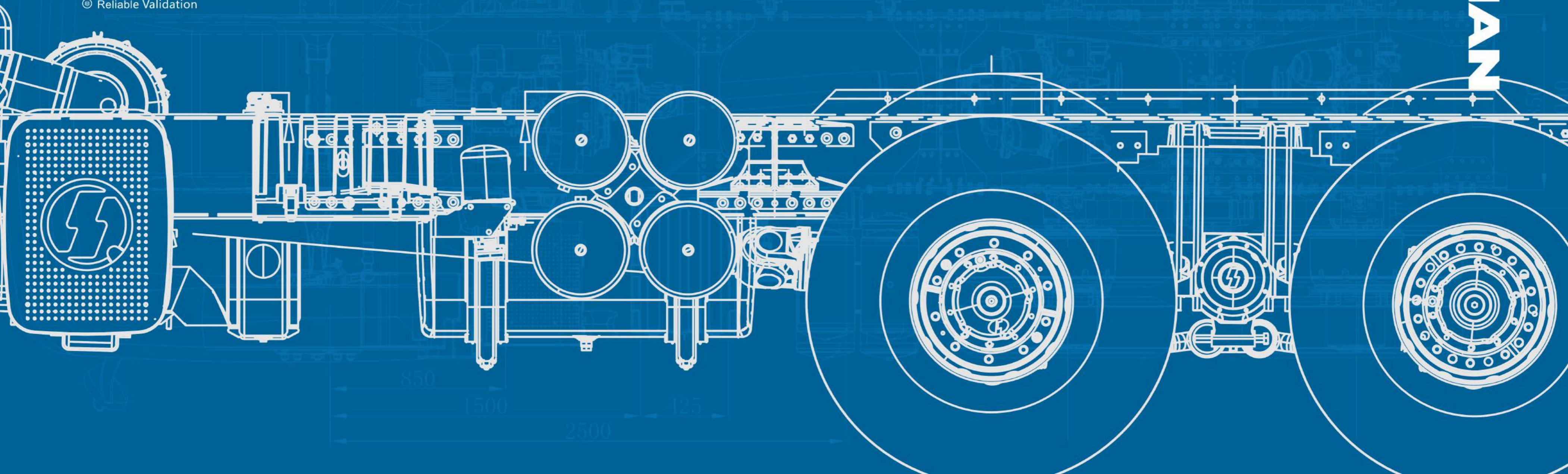


## R&D

We always believe that innovation makes the world a better place. Our R&D team, full of innovative consciousness, keeps us at the forefront of the industry's technology. The rigorous reliability validation is the manifestation of our pursuit of ultimate quality. More importantly, mastering core technology is the foundation of existence of SHACMAN.

- ⊕ Innovation Strength
- ⊗ Multi-route R&D
- ⊙ Autopilot
- ⊖ Reliable Validation

TRUCKING MADE BETTER  **SHACMAN**





#### R&D center

National-level Technology Center & Post-Doctoral Research Center  
HANDE Axle Technology Center (CNAS authentication)  
Key Laboratory of Energy Saving and New Energy Heavy Trucks

• CHINESE SCIENCE AND  
TECHNOLOGY PROGRESS AWARD

• CHINESE SCIENCE CONFERENCE AWARD

• CHINESE SCIENTIFIC AND TECHNOLOGICAL  
ACHIEVEMENT AWARD



**3600+**  
Patents & self-developed  
technologies

**480+**  
New energy/Intelligent  
networking patents

**3000+**  
Scientific researchers



TRUCKING MADE BETTER



SHACMAN



www.shacman.com

## MULTI-ROUTE R&D



### Traditional fuel

#### ● Surging Engine

- Industry-leading power source of up to 840 hp
- $\geq 50\%$  thermal efficiency exclusive customized engine

#### ● Efficient Gearbox

- Intelligent AMT transmission Gen2 with efficiency up to 99.7%
- Integration of 12 intelligent functions leads to smooth and reliable shifting

#### ● Maintenance-free Axle

- FAG maintenance-free axle significantly reduces cost of use
- 98.5% ultra-high transmission efficiency

### Alternative fuel

#### ● Technical Accumulation

- As the first company in China to develop natural gas heavy trucks, SHACMAN produced its first CNG heavy truck in 2005
- In 2023, SHACMAN released the 590hp LNG truck, achieving a leading position in the industry

#### ● Efficient & Reliable

- The gas engine has a thermal efficiency of up to 54.16%
- SHACMAN NG trucks undergo tests under extremely harsh conditions to ensure reliability, such as drop tests from a height of 9m and a combustion test at 550°C

### New energy

#### ● Self-developed Motor System

- High-efficiency surging motor
- 4-in-1 integrated smart electronic controller

#### ● High-standard LFP Battery

- Top global battery suppliers supply
- High-density lightweight LFP battery

#### ● Intelligent Control System

- L4 autonomous driving
- Smart battery management + Smart voltage monitoring + Smart energy recovery
- Smart fault diagnosis





### Hypersensory perceiving system

- **High-performance sensor matrix:**  
Camera, LIDAR, millimeter wave radar and ultrasonic radar
- **Perception fusion algorithm:**  
Reduce the perception error of the target and increase the adaptability of the perception system to weather and light
- **360° holographic Perception:**  
Forward sensing area exceeds 300 m<sup>2</sup>

### Multidimensional positioning technology

- **Centimeter-level fusion positioning:**  
By combining multiple positioning methods such as GPS+IMU and visual SLAM positioning, centimeter-level accurate positioning can be achieved under complex conditions
- **High-precision autonomous driving map:**  
Using high-precision LiDAR and cameras to obtain real-time environment information and regularly update dynamic maps



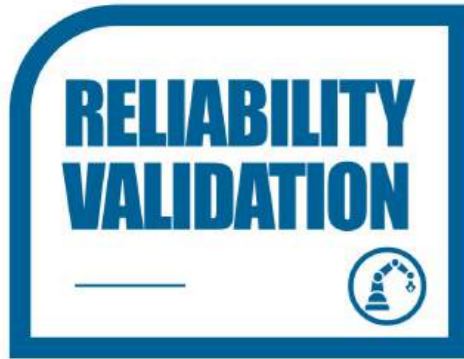
### Smart autopilot decision-making

- **Graph search path planning:**  
Based on graph search algorithm, which can realize lane-level navigation
- **Multi-layer behavioral decision-making model:**  
Driven by the control module to achieve functions such as automatic start-stop, autonomous response to traffic lights, and automatic parking

### Security executing guarantee

- **Safe redundancy design concept:**  
Perception, control, and computation all retain redundant performance to ensure the safety of vehicles in unexpected situations
- **Centimeter-level line control execution:**  
Mature line control chassis system achieves centimeter-level control based on driving conditions





- Parts validation: suspension durability test, brake component performance test



- Assembly validation: six-degree-of-freedom test bench auxiliary testing, vehicle frame fatigue testing



- Vehicle validation: vehicle extreme environment test, auxiliary testing of vehicle drum test bench

Through the five capabilities of vehicle styling design, engineering design, simulation analysis, test development evaluation, and prototype testing, the reliability of the vehicle is fully validated, providing customers with the best products.



# PRODUCT

SHACMAN offers six categories of products to global customers, including heavy-duty trucks and inter-city trucks, divided into trailers, dump trucks, cargo trucks, and special vehicles, of which the main sales are 6000, 5000, and 3000 series. In addition, to meet personalized needs, SHACMAN will provide customized truck solutions for different countries, regions, businesses, individuals to satisfy individual unique requirements.



TRUCKING MADE BETTER  **SHACMAN**



Intelligence Leads Efficiency

## X6000

Loading, Leading  
Long-distance standard load transportation

### Character

- Cold chain transportation expert
- Dangerous goods transporter
- Daily industrial goods transporter

### Ability

- Brand new technology, reshaping benchmark
- More than one direction, all in intelligent steering
- Living in the cabin, enjoying like at home

## H6000

Easy to load, light to travel  
Multi-purpose heavy-duty transportation

### Character

- Intercity logistics hauler
- Heavy-load haulage all-rounder

### Ability

- Easy to modify, easy to drive
- Humanized design, comfortable driving environment
- Low drag for fuel saving, high horsepower for efficiency enhancement

## M6000

Efficient work, comfortable drive  
Medium and short-distance transportation

### Character

- Intercity logistics hauler
- Cold chain transportation expert

### Ability

- Real-time computational power, enhanced economic speed
- Industry-rare flat floor cargo truck

## L6000

Intercity logistics at the peak  
Short-distance urban logistics transportation

### Character

- Intercity intelligent logistics expert

### Ability

- Easy-access to the low chassis , freely navigating sharp turns
- Flat floor and quiet cabin for immersive travel experience



TRUCKING MADE BETTER

SHACMAN

www.shacman.com



Enjoy Ultimate Comfort



5000  
SERIES



**X5000**

Born for logistics  
Multi-functional transportation

**Character**

- Daily industrial goods transporter
- Concrete mixing expert

**Ability**

- Driving focused environment, human-machine comfort experience
- A series of safety considerations to demonstrate SHACMAN quality

**L5000**

Flexible hauler, faithful helper  
Short-distance transportation

**Character**

- Daily industrial goods transporter
- Concrete mixing expert

**Ability**

- Agile body, boosting business
- Comfort assured, delivery secured



Quality Creates Benefit



3000  
SERIES



## X3000

Trust in every run  
Long-distance logistics transportation

### Character

- Construction & mining operator
- Daily industrial goods transporter
- Special mission all-rounder

### Ability

- Low cost of use & long service life
- Fuel economy & driving comfort
- Industry-leading golden power train

## H3000

Load anything , go anywhere  
Multi-functional medium and short-distance transportation

### Character

- Coal carrier
- Container handler
- Urban residue mover

### Ability

- Fuel economy, power continuity
- Lighter weight, easier passage
- Reliable vehicle body, better loading capacity

## F3000

Heavy-duty engineer  
Multi-functional heavy-duty transportation

### Character

- Mining operation engineer
- Heavy-load haulage expert

### Ability

- Fuel economy & High load capacity
- Super reliability, super trafficability
- Noise & shock reduction, smooth even in harsh road conditions

## L3000

Inter-city transport all-rounder  
Inter-city short-distance transportation

### Character

- Container handler
- Urban lifter
- Daily industrial goods transporter

### Ability

- Lighter weight, greater maneuverability
- Custom modification, better usability



110T offset mining dump truck



Suction-type sewer scavenger



Truck mounted crane



Recovery truck



Fire truck



Refuse collector truck



Logging transporter



Off-road truck

MULTIFUNCTION



In the international terminal tractor market of exports, SHACMAN has delivered batches of such vehicles to large overseas international port groups of Singapore, South Africa, Saudi Arabia, Turkey, and South Korea, ranking the first in China's export.



TRUCKING MADE BETTER



SHACMAN



www.shacman.com



## SERVICE

Customer needs are the beginning of all our services. We are committed to helping customers solve all concerns related to products. CARE services and flexible accessory supply are essential components of the vehicle's normal operation. Mile after mile. Day after day. This is the core of our promise to provide the best possible support throughout the entire lifecycle of your truck and beyond.





# CARE



## Customized

### 1<sup>st</sup> CARE

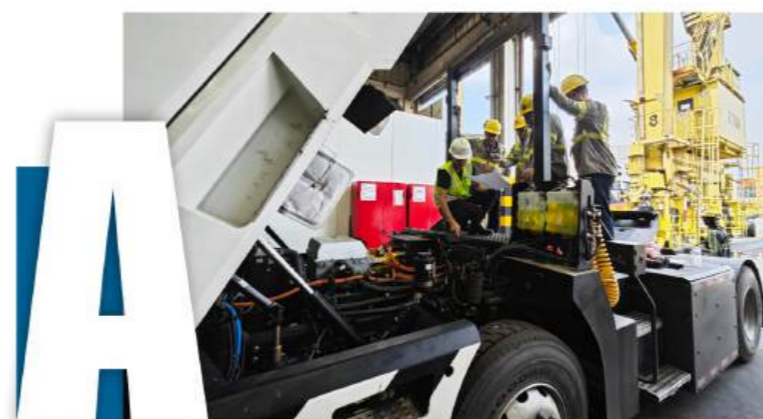
We assign special personnel on site to provide customers with round-the-clock on-site service to meet their needs at the first time.

### Localization Solution

We have over 150 top-notch service engineers stationed overseas on a long-term basis, capable of swiftly addressing diverse customer service needs.

### Pre-Inventory of Spare Parts

We've innovatively introduced pre-inventory of spare parts in the market, significantly reducing the time required to supply the needed parts to our customers.



## All-round

### Pre-delivery

A series of pre-delivery solution planning, including site investigation, product customization, financial service options, and service assurance plans.

### Delivery

A series of delivery services, including departure inspection, port inspection, PDI, operation training.

### Post-delivery

Global service network, SHACMAN Telematics, tailored training programs, and regular maintenance plans safeguard the operation of every truck. Additionally, gathering customer satisfaction evaluations can enhance our service quality.



## Remote

### Online Consultation

SHACMAN headquarters has established a remote expert service team, providing customers with uninterrupted technical support around the clock.

The regional call center ensures that immediate telephone technical assistance is available in case of emergencies.

### Accessory Information System

- One-Key Inquiry
- Intelligent Analysis
- Automatic Recommendation
- Image Recognition

### SHACMAN Telematics

Vehicle positioning, fuel consumption statistics, remote locking, abnormal alerts, video surveillance, and many other functions are all at your fingertips.

### Quality Big Data

In response to vehicle issues detected through Big Data, we promptly implement improvements.



## Extra

### Emergency Response Team

The highly mobile emergency response team at SHACMAN headquarters is always ready to provide on-site support to clients overseas.

### Value-added Service

Free consultation, technical support, free vehicle inspection, second-hand car and other value-added services.

### In-house Spare Parts

We are establishing an in-house spare parts supply system globally to provide customers with genuine high-quality accessories and a one-stop maintenance service.



TRUCKING MADE BETTER

SHACMAN

www.shacman.com

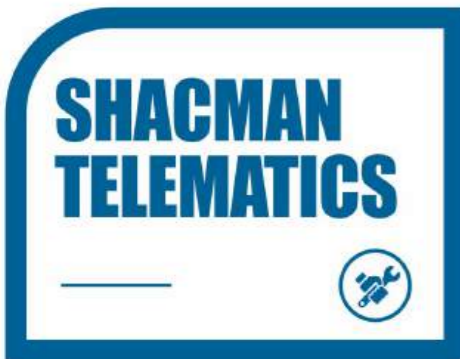
# FLEXIBLE GUARANTEE

By combining overseas channel reserves, precise market pre-delivery accessories and self-operated accessory guarantees, the 3-tier accessory guarantee model comprehensively improves the market's accessory inventory, formulates regionally exclusive accessory guarantee plans, and enables customers to obtain repair accessory resources more quickly and conveniently.



**250+**  
Accessories channels

**30 million+**  
USD accessories reserves



Commercial vehicle networking  
integrated service provider



● DRIVING BEHAVIOR  
ANALYSIS

● REGIONAL OVER-  
SPEEDING STATISTICS

● OIL AND GAS  
CONSUMPTION ANALYSIS

● REMOTE FAULT  
DIAGNOSIS



## SCHEDULING

- Historical trajectory
- Vehicle monitoring
- Message management
- Image capture

## SYSTEM

- Vehicle archives
- Driving record
- Operation record query

## STATISTICS

- Oil and gas consumption analysis
- Driving behavior analysis
- Vehicle mileage statistics
- Regional over-speeding statistics

## SETTINGS

- Circuits settings
- Alarm system
- Regional settings
- Driving score settings

## SAFETY

- Remote fault diagnosis

## FLEET MANAGEMENT



TRUCKING MADE BETTER



SHACMAN



www.shacman.com

33

34



Since we set our foot overseas, we have never stopped developing our marketing network as well as after-sales service. Now, SHACMAN's products have been delivered to more than 140 countries and regions, and its sales and service network covers almost every corner of every continent.

We are rapidly advancing on the path of internationalization and localization, delivering the values we uphold and meeting customers' needs with ultimate quality. We are walking on a path of win-win cooperation with every partner and customer.



SHACMAN  
TRUCKS MADE BETTER



19  
Localized factories

40+  
Marketing areas

140+  
Countries covered

200+  
Primary dealers

550+  
Service stations



TRUCKING MADE BETTER

SHACMAN

www.shacman.com



At present, SHACMAN has 18 marketing areas, 167 service stations, 19 spare parts warehouses, 52 spare parts stores and 9 localized factories in Africa. With a cumulative sales of more than 108,000 heavy-duty trucks, it has become a leading local heavy-duty truck brand.

From the Nile River to Cape of Good Hope, SHACMAN has almost traveled to every corner of this vast land and cultivates local markets with African people and governments.



SHACMAN at the cement plant in Mozambique



SHACMAN South Africa Assembly Plant



SHACMAN delivers for use in Tanzania



Zambia self-operated parts center



Moroccan assembly plant



SHACMAN serves major clients in Zimbabwe

**18**  
Marketing areas

**167**  
Service stations

**19**  
Spare parts warehouses

**52**  
Spare parts stores

**9**  
Localization factories



- Algeria International Capacity Cooperation Project.
- Serving Dangote Group, J&J company, etc.
- Parts center warehouse in Zambia company, etc.
- Customized solution for cross-border logistics.



## EASTERN EURO & CIS



- SHACMAN accounting for local Chinese truck market share: 40% in Kazakhstan, 80% in Turkmenistan and 70% in Tajikistan.
- At present, there is a total of 80+ products to meet the certification requirements of the CU-TR Certification/EAC Certification, which is the Chinese heavy truck enterprise with the largest number of certified models and the most complete models.
- SHACMAN has achieved localized production in Kazakhstan and Kyrgyzstan.

4

Marketing areas

128

Service stations

2

Spare parts warehouses



The Eastern European CIS countries are SHACMAN's major traditional market, with a cumulative sales volume of more than 124,000 units and a market share of more than 40% among Chinese heavy-duty truck brands.

At present, SHACMAN has 4 marketing areas in Eastern Euro & CIS, 128 service stations, 2 spare parts warehouses, 7 spare parts stores.

Central Asia market has been the utmost competitive region for SHACMAN for years. But coldness and mountains never stop the motion of SHACMAN wheels, as well all round professional services.



X6000 ready for display at the auto show



X6000 on the Russian highway



X5000 Dump Truck Serves Russian Customers



F3000 Super Edition Dump Truck Serves Uzbekistan Customers



SHACMAN's flagship painted model at the exhibition



L3000 cargo truck traveling on Uzbekistan highway



Asia Pacific region bridges SHACMAN group with international market, and provides key clients for us which lays a solid foundation for establishing SHACMAN a figure of both reliable partner and strong competitor in truck industry.

At present, SHACMAN has 9 marketing areas in Asia Pacific, 168 service stations, 8 spare parts warehouses, 44 spare parts stores. SHACMAN has achieved localized production in Malaysia and Pakistan.



X3000 electric dump truck serves the mining areas in Southeast Asia



SHACMAN exhibited in Indonesia



X3000 mixer truck serves New Zealand customer



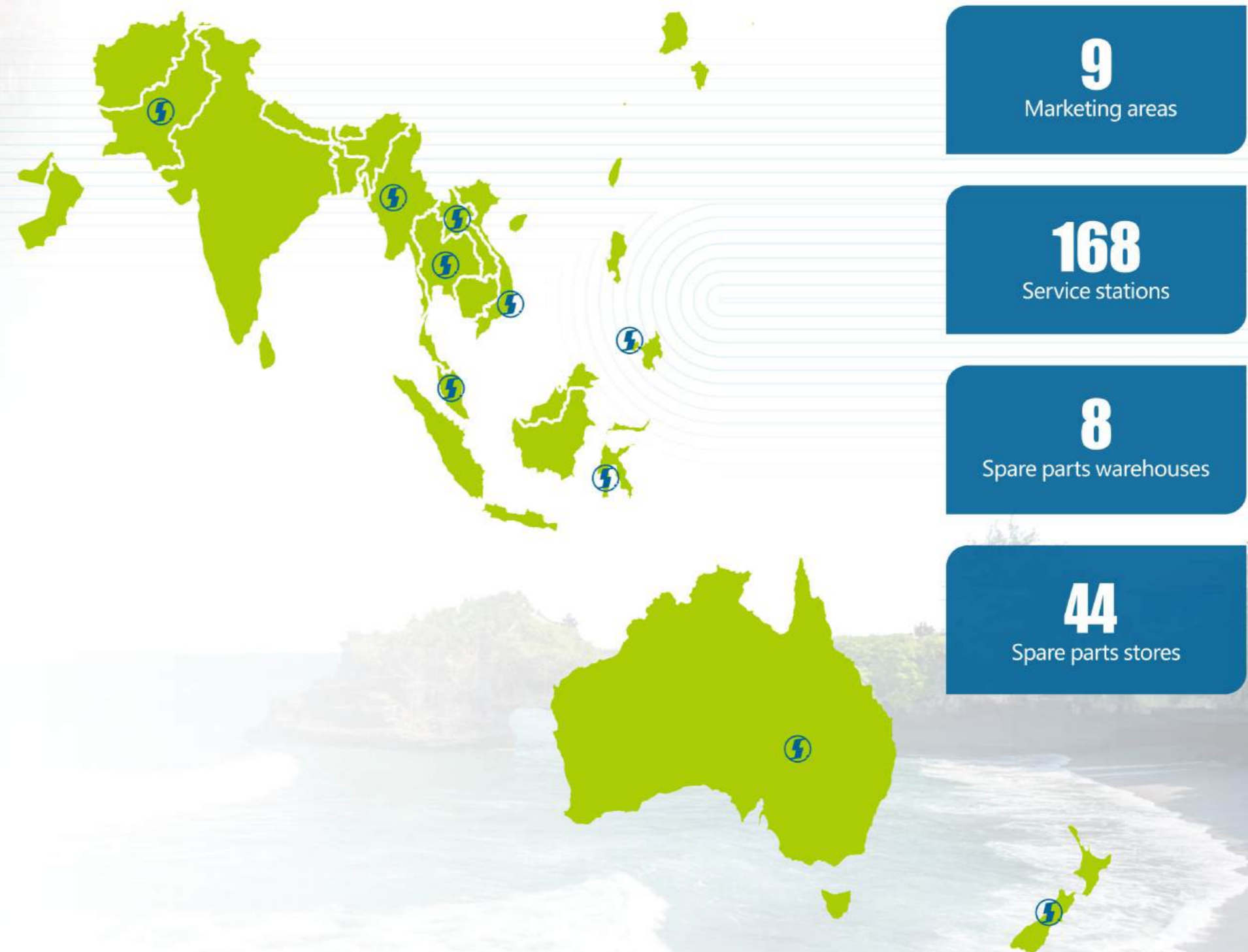
SHACMAN Malaysia 4S Store



X3000 showcased at the Indonesia Mining Exhibition



SHACMAN services Cambodia petroleum company



- Indonesia Nickel Project realized 7000 trucks sales and pre-reserved parts worthy of 21.8 million USD.
- SHACMAN accounts for more than 30% of China's heavy truck export market share in Indonesia , Myanmar.



In competing with European high-end trucks in the Middle East, SHACMAN keeps improving the overall performance of vehicle products, and expanding into this region with sales breakthrough by implementing cooperative projects with local governments.

At present, SHACMAN has 4 marketing areas in Middle East, 37 service stations and 6 spare parts stores. SHACMAN has achieved localized production in Saudi Arabia.



X3000 6×6 AWD desert truck in UAE



H3000 on the Gobi Desert in Saudi Arabia



SHACMAN transports relief supplies in Afghanistan



SHACMAN exhibited in Dubai



SHACMAN Saudi Arabia dealership



SHACMAN at Big 5 Global 2024

- The upgraded X6000 truck has entered the Middle East market , and its product strength is on par with European high-end trucks.
- The all-wheel-drive X3000 6×6 desert tractor has successfully entered the UAE market.



**4**  
Marketing areas

**37**  
Service stations

**6**  
Spare parts stores



## CENTRAL & SOUTH AMERICA



Running through hills and valleys, rainforest and plateau. From the delivery of first batch trucks, to official operation of local assembly line, from traditional fuel-driven trucks to LNG products, SHACMAN strives to perform its best in supporting governmental and livelihood projects and developing sales networks.

At present, SHACMAN has 4 marketing areas in Central & South America, 19 service stations, 3 spare parts warehouses, 1 spare parts stores. SHACMAN has achieved localized production in Mexico and Peru.



X3000 platform models displayed at the Dominican auto show



L3000 Serving Jamaican Customers



Hundreds of X5000 tractors ready to go to Colombia



SHACMAN WWCC Central and South America 2024



SHACMAN natural gas heavy trucks serve the Brazilian market



SHACMAN Mexico localized factory

- SHACMAN accounts for Chinese truck market share in Jamaica, Dominica and Peru, respectively reaches over 78%, 40% and 30%.
- X6000 localization production achieved at the Mexican plant.

# 4

Marketing areas

# 19

Service stations

# 3

Spare parts warehouses



## KEY PROJECTS



Total solution expert for  
global infrastructure projects

Apart from helping our customers from over 140 countries and regions to efficiently operate their vehicles, SHACMAN also takes many social responsibilities, who has been there representative of Chinese heavy-duty truck overseas.



### RAILWAY PROJECT

- Kenya Mombasa-Nairobi Railway Project
- China-Laos Railway Project
- Nacala Corridor Project in Mozambique



### HOUSING PROJECT

- Angola Social Housing Project



### PORT PROJECT

- Qatar Sea Port Project



### HYDROPOWER

- Suapiti Hydropower Project
- Pakistan Hydropower Project



### HIGHWAY PROJECT

- Algeria East-West Highway Project
- Bolivia ESPINO Highway Project
- Pakistan KKH Highway Project
- Golden Port Expressway Project



TRUCKING MADE BETTER

SHACMAN

www.shacman.com



Add:Shaanqi Avenue,Jingwei Industrial Park,Economic  
& Technological Development Zone,Xi'an

**0086-29-86956901/5911**